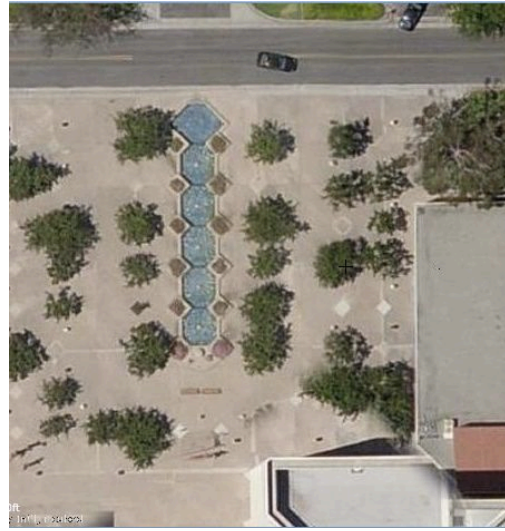


Huntington Beach 9/11 Monument Design Criteria & Location Information



Location #1



Location #2

Designers are encouraged to visit the two sites at Huntington Beach City Hall and design a monument specific to one of the locations. Location #1 is located to the Southwest of the City Council Chambers (currently there are 3 large circular planters at this location). Location #2 is to use a portion of the fountain area to the front of City Hall and the Police Department. The remainder of the fountain would be removed. (The City is discouraging the use of a water feature for the monument due to high ongoing maintenance and a high cost of running the feature.)

Criteria:

1. Feature the use of the two sections of World Trade Center Steel in the design
 2. The monument may be multiple structures or a single structure.
 3. Incorporate the World Trade Center, The Pentagon, and Flight 93 that crashed near Shanksville, PA
 4. Avoid religious connotations (no crosses)
- *** The HB 9/11 Monument Committee reserves the right to all or portions of any designs submitted.

Design concepts for the 9/11 memorial should also be mailed to the HB 9/11 Monument Design Committee at PO Box 896, Huntington Beach, CA 92648 by Dec. 15. For more information, call (714) 842-8851 or visit <http://www.hbpoa.org>.